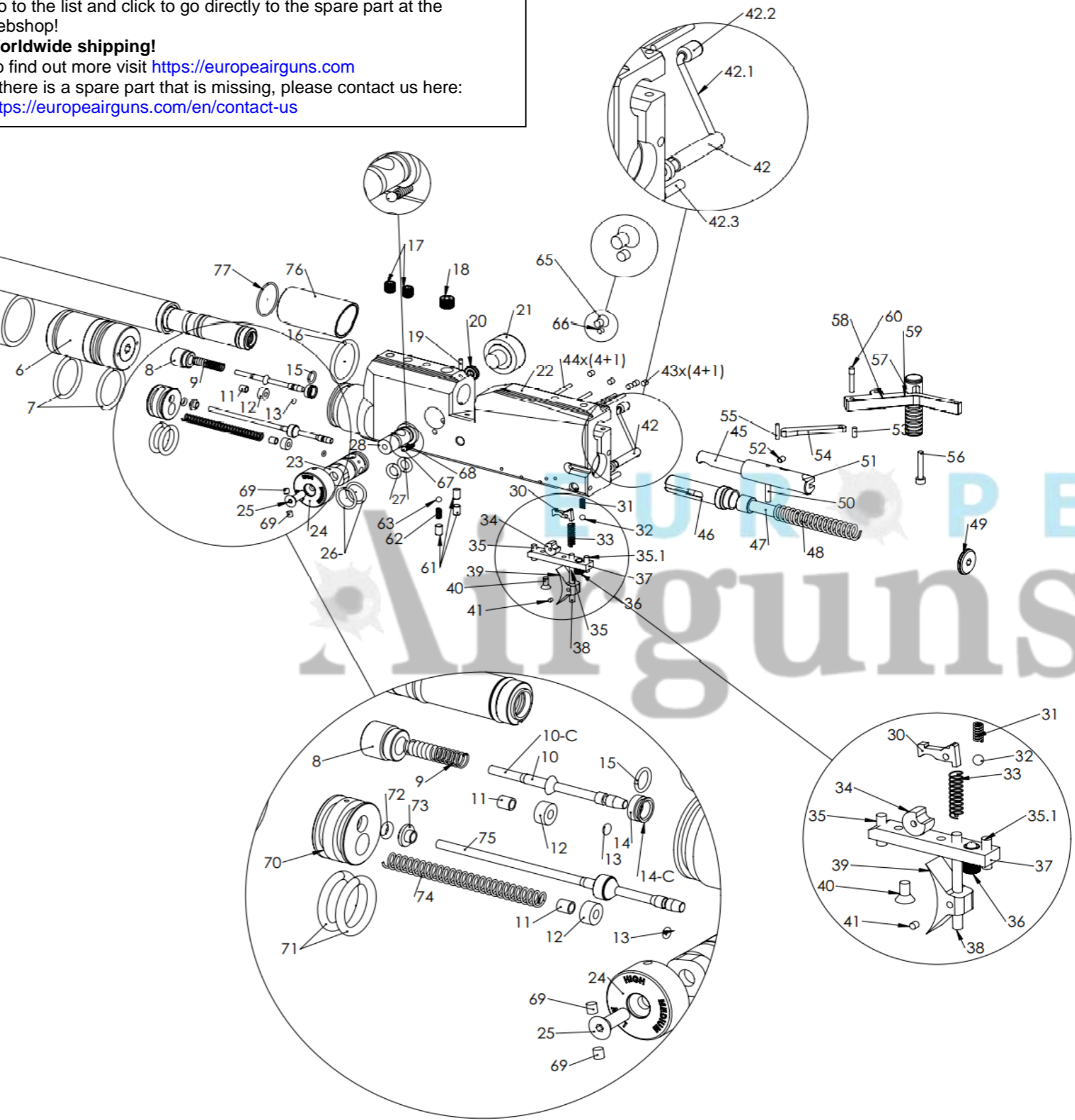


Go to the list and click to go directly to the spare part at the webshop!  
**Worldwide shipping!**  
 To find out more visit <https://europeairguns.com>  
 If there is a spare part that is missing, please contact us here:  
<https://europeairguns.com/en/contact-us>



Position	Description	Art. No.	Position	Description	Art. No.
1	Pressure gauge 25mm Plastic 1/8"	FX11503	40	Countersunk Screw M3x6	FX2504
2	Dust Cover	FX19544	41	Grub screw M2,5x2,5	FX12035
3	Tube end pressure gauge	FX20080	42	Safety pivot Bullpup	FX20056
3.1	Plastic washer 2mm 1/8"	FX5000	42.1	Safety Lever 32,5mm	FX19860
3.2	O-ring 24x2 NBR 70	FX19484	42.2	Safety knob	FX11200
3.3	O-ring 23,ox2,5 NBR 70	FX19485	42.3	Grub screw M3x8	FX19742
3.4	O-ring 4x1,5 NBR70	FX19109	43	Cup point grub screw M3x3	FX2562
3.5	Countersunk screw M4x8 Torx	FX11511	44	Cylindrical pin 2h6x20	FX11502
4	Barrel Cpl., see drawing F10061-Dreamline Barrel kit		45	Pellet probe Dreamline .177	FX20060
5	Tube 34x360 (.177, .22)	FX19830	45	Pellet probe Dreamline .22	FX20061
6	Tube 34x475 (.25, .30)	FX19831	45	Pellet probe Dreamline .25	FX20062
5	Regulator Airtube adjustable. - See drawing F10056	FX20199	45	Pellet probe Dreamline .30	FX20063
7	O-ring 23x2,5 NBR70	FX19485	46	Hammer V7	FX19039
8	Valve holder Dreamline, until ser.no. 194000	FX20037	47	Hammer weight 4mm cal. .177, until ser. No. 194000	FX19213
9	Spring 0.5x4x20, until ser.no. 194000	FX19850	47	Hammer weight addition cal. .177, until ser. No. 194000	FX18041
10C	Valve pin Dreamline Complete, until ser.no. 194000	FX20135	47	Hammer Weight cal. .22, .25, .30, until ser. No. 194000	FX17003
10	Valve Pin Dreamline, until ser.no. 194000 included in complete valve pin	FX20036	47	Hammer weight, cal. .177, .22, .25 after serial No. 194000	FX19215
11	Holder Valve seal, included in complete valve pin	FX2041	47	Hammer weight cal. .30, after serial No. 194000	FX17003
12	Gasket SHP, included in complete valve pin		47	Hammer weight Tugsten 8mm	FX17003
12	Valve gasket 7.4x3x5x2.9 Impact, from ser. No. 0101759, included in complete valve pin 20153C-1		48	Hammer spring V2	FX11500
13	O-ring 1.5 x 1.0 N BR 70, also included in complete valve pin	FX2528	49	Hammer spring adjuster (only on Classic model)	FX11541
14C	Valve seat SHP Complete, until serial no. 0101759	FX19060	50	Cylindrical pin 3h6x20	FX11510
14C	Valve seat Complete, after serial no. 0101759	FX2024C	51	Carrier Dreamline	FX20058
14C	Valve seat Cal. .30 Complete 10J-12FT	FX19217	52	Grub screw M3x4	FX16092
15	O-ring 6x1 N BR 90, also included in valve seal complete 19060	FX19061	53	Cylindrical pin 2.5m6x6	FX19026
15	O-ring 8x1 N BR 90, also included in valve seal complete 2024C		54	Linkage Crown	FX19935
16	O-ring 23x2,5 NBR70	FX19485	55	Cylindrical pin 2h6x10	FX19213
17	Grub screw M6x6	FX19846	56	Socket head cap screw MC65 M3X18	FX11060
18	Grub screw M8x6	FX19955	57	Side lever handle handle B2-WC-IM	FX19611
19	Cylindrical pin 2h6x6	FX19601	58	Magnet 5x4mm	FX20055
20	X-ring 3,63x2,62 NBR 70	FX19762	59	Side lever Dreamline	FX20064
21	Pressure gauge 23mm	FX19772	60	Screw M3 (special)	FX19034
22	Main block Dreamline, Until serial no. 190310 use art-no.20020 R	FX20126R	61	Grub screw M4x6 flat, until ser. No. 190310	FX2637
23	Power adjuster, outer, Until serial no. 190310 use art no. 20034	FX20125	62	Spring 0.5x2,5x6,1 ... until ser. No. 190310	FX11501
24	Power adjuster Crown, Until serial 190310 use art-no.19915	FX20123	63	Steel ball 3mm, until ser. No. 190310	FX4066
25	Countersunk screw M4x14	FX16104	64	N/A	
26	O-ring 11.1x1.6 NBR90	FX19956	65	Countersunk screw M4x6, after ser. no. 190310	FX5208
27	O-ring 5.5 x 2 NBR 70	FX19953	66	Grub screw M3x3, after ser. no. 190310	FX2562
28	Power adjuster inner, Crown, Until serial no. 190310 use art-no.19922	FX20124	67	Steel ball 3mm, after ser. No. 190310	FX4066
29	N/A	N/A	68	Spring 0.5x2,5x6,1 after ser. No. 190310	FX11501
30	Triggersear v7, 8, 12	FX19177	69	Grub screw M3x3, after ser. No. 190310	FX2562
31	Spring 0.5x2,5x6, 1	FX11501	70	Cover Valve Pin long, HP, after ser. no. 194000	FX20152
32	Steel ball 3,175mm V1.2.3.4.5	FX11527	70	Cover Valve pin long, 10J, 12FT, after ser. no. 194000	FX20175
33	Spring 0.32x3,2x14,4	FX11504	71	O-ring 13,95x2,62 NBR 70, after ser.no. 194000	FX12045
34	Trigger Wheel	FX11525	72	O-ring 2,5x1,5 NBR90, after ser.no. 194000	FX5111
35	Grub screw M3x8	FX19742	73	Springseat, after ser. no. 194000	FX19038
35.1	Grub screw M13x10	FX11508	74	Spring 0.6x4x60, after ser. no. 194000	FX20180
36	Adjuster screw 2:st stage, soft	FX11062	75	Valvepin Dreamline long complete, after ser.no. 194000 until ser.no. 0101759	FX20153C
37	Triggercatch Dreamline, standard	FX20033	75	Valvepin Dreamline long complete, after ser.no. 0101759	FX20153C-1
38	Trigger pin	FX19809	76	Barrel support Dreamline Complete (with o-ring)	FX20162C
39	Adjustable Trigger blade	FX19136	77	O-ring 20x1 NBR 70	FX20159

**EUROPE**  
**Airguns**®