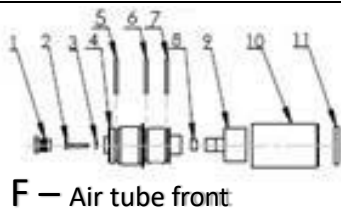
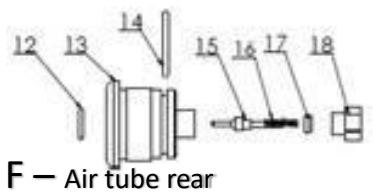
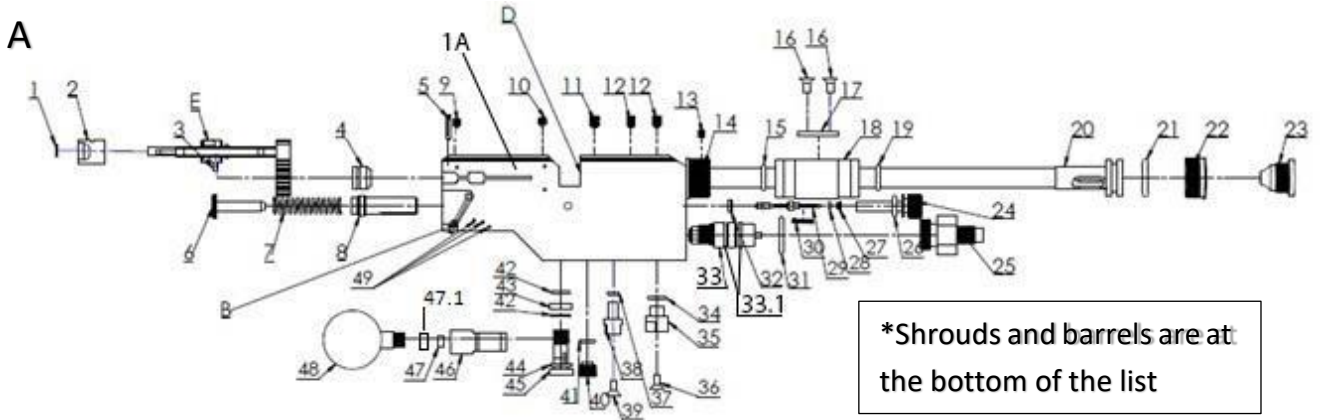
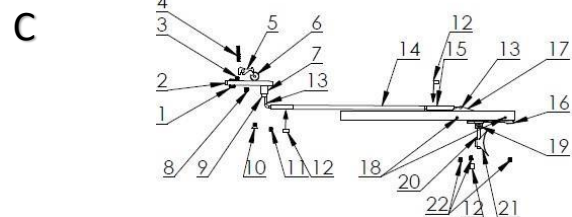
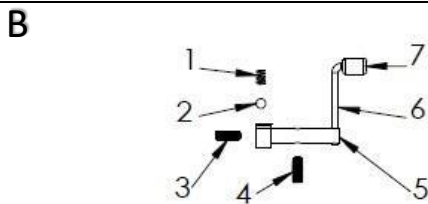
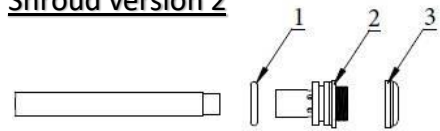


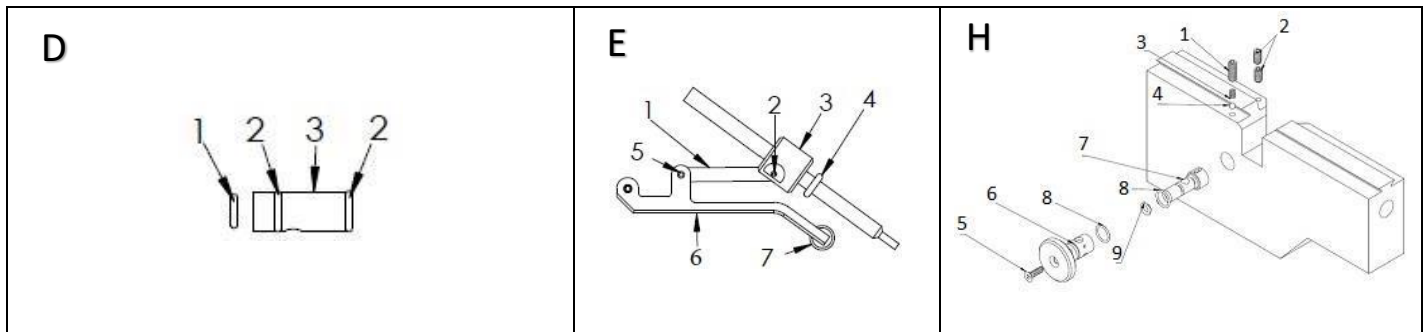
Model	Other model names	Date	Revision	Revision date
FX Bobcat MkII		2019-07-29	EN.21.02	2021-05-12



Shroud version 2



Model	Other model names	Date	Revision	Revision date
FX Bobcat MkII		2019-07-29	EN.21.02	2021-05-12



NO	ART.NO	DESCRIPTION	NO	ART. NO	DESCRIPTION
1	FX19336	Cheek piece Bobcat	A24	FX19009	Guide M16
2	FX19317	Rail bobcat 5 hole	A25	FX19056	Connector M20x1 v7
2.1	FX4509	Socket head cap screw M5x20	A26	FX5105	O-ring 9,3x2,4 NBR90
			A27	FX19038	Spring seat v7
3	FX19320	Bobcat stock	A28	FX5111	O-ring 2,5x1,5 NBR90
6	FX16051	Adjustable recoil pad	A29	FX7015	Valve pin V7 complete
A 1A	FX19004-4R	Main Block Bobcat MkII .177	A29	FX7019	Valve pin SHP - Complete
A 1A	FX19005-5R	Main Block Bobcat MkII .22	A29		
A 1A	FX19006-6R	Main Block Bobcat MkII .25	A30	FX2525	Spring 0,6x4x15
A 1A	FX19311-1R	Main Block Bobcat MkII .30	A31	FX12046	O-ring 15,88x2,62 NBR90
A 1A	.30	Barrel housing V13 .30	A32	FX7044	Complete Valveseat
A1	FX5112	O-ring 5,28x1,78 NBR 70	A32	FX19060	Complete SHP Valveseat
A2	FX19029	Rear pellet probe guide	A32	FX19217	Valve seat Cal.30 Complete
A3	FX11509	CPK 3h6x10	A33	-	See "Regulator pressure chart" schematic
A4 - 4,5	FX19013	Black plastic bushing	A33.1	FX5109	O-ring 11,6 x 2,4 NBR 70
A4 - 5,5	FX19012	Black plastic bushing	A34	FX19327	O-ring 10,1x1,6 NBR70
A4 - 6,35	FX19101	Black plastic bushing	A35	FX19302	Attachment 1/8" to M5
A4 - 7,62	FX19211	Black plastic bushing	A36	FX5203	Countersunk M5x10
A5	FX19034	M3 special screw v7	A37	FX5112	O-ring 5,28x1,78 NBR70
A6	FX11541	Hammer spring adjuster	A38	FX19121	Stock attachment
A6	FX11030	Hammer spring Adjuster M16x1x2,5	A39	FX5203	Countersink M5x10
A7	FX11500	Hammer spring	A40	FX19330	Plug
A8 - 6,35-5,5	FX11540	Hammer weight	A41	FX4528	O-ring 7,66x1,78 NBR 70
A8 -7,62	FX17003	Hammer weight v4	A42	FX19327	O-ring 10,1x1,6 NBR70
A8	FX19039	Hammer v7	A43	FX19230	Washer seal guide
A9	FX5203	Countersunk screw M5x10	A44	FX1511	Rubbersteel washer 1/8"
A10	FX2534	Conical grub screw M5x6 with tip	A45	FX19052	Gauge mount Bolt v8
A11	FX19086	Conical grub screw M6x8	A46	FX19051	Gauge mount
A11 - 7,62	FX19224	Conical grub screw M8x8	A47	FX5003	Plastic Washer 4mm 1/8"
A12	FX2503	Conical grub screw M5x8	A47.1	FX5010	Plastic washer 8.5x2.6x1.0
A12 -7,62	FX19086	Conical grub screw M6x8	A48	FX19347	Pressure gauge Bobcat 250bar
A13	FX11201	Conical grub screw M5x4	A49	FX19040	Cylindrical pin 2m6x23,5
A14	FX19314	Rear shroud mount bullpup	B1	FX11503	Spring 0,5x2,5x4,4
A15	FX12045	O-ring 13,95x2,62 NBR70	B2	FX11527	Steelball 3,175
A16	FX19025	Countersunk screw M5x8	B3	FX11633	Grubscrew M2,5x8
A17	FX19014	Dovetail plate	B4	FX11508	Grubscrew M3x8

Model	Other model names	Date	Revision	Revision date
FX Bobcat MkII		2019-07-29	EN.21.02	2021-05-12

A18	FX19316	Barrelsupport	B5	FX11027	Safety pivot
A19	FX12045	O-ring 13,95x2,62 NBR70	B6	FX11625	Safety lever 27,5mm Cyclone, Cutlas, Rancho.
A20	FX19028	Shroud compensator 4,5-5,5	B7	FX11200	Safety knob
A21	FX19098	O-ring 18,0x4,0 NBR70	C1	FX11062	Adj screw second stage, soft
A22	FX18010	Muzzle thread insert	C2	FX11524	Trigger base
A23 – 4,5	FX17023	Muzzle	C3	FX2500	Grubscrew M3x6
A23 – 5,5	FX17000	Muzzle	C4	FX11504-2	Spring 0,4x2,5x15
A23 – 6,35	FX19112	Muzzle	C5	FX11031	Trigger Sear
A23 – 7,62	FX19212	Muzzle	C6	FX11525	Trigger roll
			C7	FX19315	Trigger block receiver side
		Shroud version 2.	C8	FX16092	Grubscrew M3x4
1	FX5113	O-ring 20,24 x 2,62 NBR 70	C9	FX2532	Socket head cap screw M3x12
2 – 4,5 5,5	FX19122	Muzzle mkII	C10	FX13039	Countersunk M3x8
2 – 6,35	FX19124	Muzzle MkII 6,35	C11	FX2500	Grubscrew M3x6
2 – 7,62	FX19125	Muzzle mkII 7,62	C12	FX16100	Magnet 3x5mm
3	FX19128	Thread cover M20	C13	FX19305	Ballpin

Model	Other model names	Date	Revision	Revision date
FX Bobcat MkII		2019-07-29	EN.21.02	2021-05-12

C14	FX19312	Triggerextensin rod M3	H1	FX2502	Grubscrew M4x12
C15	FX19307	Trigger adjustment m3	H2	FX12033	Grubscrew 4x8 with flat tip
C16	FX19167	Match trigger rail	H3	FX11501	Spring 0,5x2,5x6,1
C17	FX19303	Trigger connection	H4	FX4066	Steelball 3mm
C18	FX19040	Cylindrical pin 2m6x23,5	H5	FX2508	Countersunk screw M3x10
C19	FX19178	Screw M2x4	H6	FX16083	Power wheel
C20	FX19137	Trigger pin	H7	FX16082	Inner axel 4,5mm for power wheel
C21	FX19136	Adjustable Trigger shoe	H8	FX19117	O-ring 8x1 NBR70
C22	FX16092	Grubscrew M3x4	H9	FX19109	O-ring 4x1,5 NBR70
D1 – 4,5	FX2529	O-ring 4,3x1,5 NBR70			
D1 – 5,5	FX5108	O-ring 5,28x1,78			AirTubes
D1 – 6,35	FX4526	O-ring 6,4x1,3 NBR 70	4,5-5,5	FX19308	<i>Tube Bobcat</i>
D1 - 7,62	FX19209	O-ring 7,5x1,5 NBR70	4,5-5,5	FX7071	Air tube Bobcat MKII 300cc, Complete discontinued
D2	FX5112	O-ring 5,28x1,78 NBR70	6,35-7,62	FX19339	<i>Air tube Bobcat/R300</i>
D2– 7,62	FX19210	O-ring 11,0x1,5 NBR70	6,35-7,62	FX7072	Air tube Bobcat MKII 470cc, Complete discontinued
D3 – 4,5	FX2057	Barrel brass inlet .177			
D3 – 5,5	FX2056	Barrel brass inlet.22			Barrels
D3 - 6,35	FX19104	Barrel brass inlet.25	4,5	FX12030	Barrel .177 14 – 485mm
D3 - 7,62	FX19207	Barrel brass inlet.30	5,5	FX12006	Barrel 55-14-485
E1	FX19021	Side lever linkage	6,35	FX19106	Barrel 6,35-14-600
E2	FX19042	Cylindrical pin 2mx6x8	7,62	FX19206	Barrel 7,62-14-600
E3 - 4,5	FX19011	Pellet probe 4,5			
E3 – 5,5	FX19010	Pellet probe 5,5			Shrouds Sweden
E3 – 6,35	FX19192	Pellet probe 6,35	4,5 & 5,5	FX19099	Shroud 345mm R5
E3 – 7,62	FX19200	Pellet probe 7,62	6,35	FX19142	Shroud 447mm Extreme
E4 – 4,5	FX19171	O-ring 4x2 NBR70			
E4 - 5,5	FX19332	O-ring 5x2 NBR70			Shrouds export
E4 – 6,35	FX19228	O-ring 6x2 NBR 70	4,5 & 5,5	FX19129	Shroud 247mm
E4 – 7,62	FX19225	O-ring 7,5x2,0 NBR 70	6,35 & 7,62	FX19328	Shroud 362,5mm .25-.30
E5	FX19026	Cylindrical pin 2,5m6x6			
E6	FX19020	Sidelever v7			
E7	FX19037	Side lever Handle v7			
F1	FX19035	Plugg 1/8" v7			
F2	FX19329	Inlet valve rod "gold"			
F3	FX5111	O-ring 2,5x1,5 NBR 90			
F4	FX19309	Tube end mano 40mm			
F5	FX19195	O-ring 28x3 NBR 90			
F6	FX19196	O-ring 30x2 NBR 70			
F7	FX19196	O-ring 30x2 NBR 70			
F8	FX5005	Plastic washer 2mm			
F9	FX11505	Pressure gauge 25mm 1/8"			
F10	FX19344	Dust cover			
F11	FX19382	Delrin bushing dust cover			
F12	FX5105	O-ring 9,3x2,4 NBR 90			
F13	FX19335	Tube end open			
F14	FX19195	O-ring 28x3 NBR 90			
F15	FX7018	Valvepin AirTube Complete			
F16	FX2525	Spring 0,6x4x15			
F17	FX7044	Valveseat complete			
F18	FX11013	Valve pin Nut			