

Go to the list and click to go directly to the spare part at the webshop! **Worldwide shipping!**

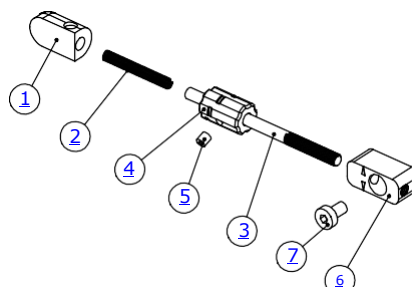
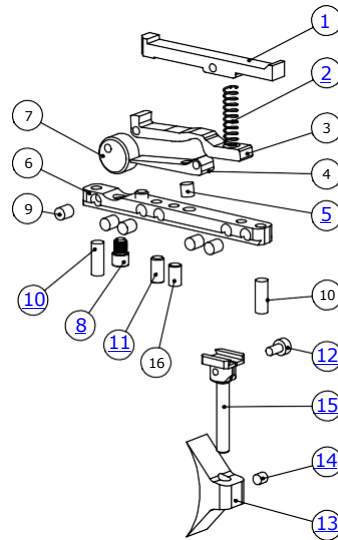
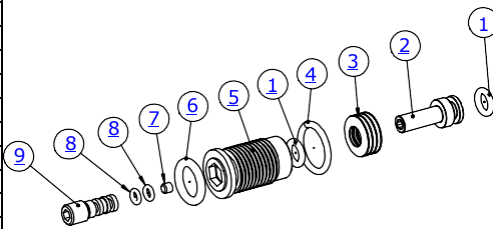
To find out more visit <https://europeairguns.com>

If there is a spare part that is missing, please contact us here: <https://europeairguns.com/en/contact-us>

Last update 30-08-2024 we may have new parts if you are reading this after.

ITEM NO.	PartNo	DESCRIPTION
1	FX20736	Trigger block Impact M4
2	FX20730	Front Support Impact M4
3	FX19979	O-ring 13,95 x 2,62 NBR 90
4	FX19718	O-ring 14x1,5 NBR 70
5	FX20745	Guiding plate Impact M4
6	FX20732	Rail Picatinny Impact M4
7	FX16123	Screw M4x12
8	FX20731	Side Picatinny Impact M4
9	FX19713	Socket head cap screw M3x6
10	FX20739	Rail Picatinny Impact M4
11	FX20740	Grip
12	FX20735	Power adjuster Impact M4
13	FX11506	Socket head cap screw M3x30
14	FX20650	Cheekrest piece Impact
15	FX12610	Socket head cap screw M3x8
16	FX19601	Cylindrical pin 2h6x6
17	FX10323	Sleeve spring pin reloadingblock Impact M3
18	FX10322	Spring pin reloadingblock Impact M3
19	FX17046	Spring 0,5x3,5x15
20	FX10299	Reloading block Impact M3
21	FX19653	Puck 9,9
22	FX19676	Sleeve reloading
23	FX19652	Puck 5,0
24	FX3010	Cylindrical pin 2,5m6 x16
25	FX2562	Cup point grub screw M3x3
26	FX10300	Rear support Impact M3
27	FX19740	Socket head cap screw M3x22
28	FX19021	Side lever linkage
29	FX10340	Sidelever Impact M3
30	FX19026	Cylindrical pin 2,5m6x6
31	FX10301	Side lever handle Impact M3
32	FX11060	Socket head cap screw M3x18
33	FX19667	Reloading bar
34	FX19612	Pellet probe guide
35	FX19614	Pellet probe holder
37	FX19641	Pellet probe Impact .177
37	FX19620	Pellet probe Impact .22
37	FX19621	Pellet probe Impact .25
37	FX19619	Pellet probe Impact .30
40	FX19643	Grub screw Pellet probe, M4
41	Support page	See Schematic "Impact barrel kit"
42	Support page	See Schematic "Bottle"
43	FX19950-90	O-ring 14x2 NBR 90
44	FX20738	Air Cylinder Connector M4
45	FX11507	Rubber/Steel Washer
46	FX20270	Hammer V2 Power plenum
47	FX2604	Hammerspring 52mm
48	FX20271	Hammer weight Big Plenum
49	FX20272	Hammer Sleeve Impact, Big Plenum
50	FX19604	Hammer Seat
51	FX1301	Spring 0,75x5,95x45
52	FX19616	Valvestop Impact
53	FX19722	O-ring 9x1,5 NBR 70
54	FX20277	Valve adjuster screw
55	FX10325	Valve stop piston Impact M3
56	FX5110	Rubberball 4,75 NBR75
57	FX19227	Rubber ball 4,0mm NBR75
58	FX10327	Valve adjuster knob Impact M3
59	FX16092	Grub screw M3x4
60	FX19717	Countersunk screw M6x8
52-60	FX19616-C1	VALVE STOP IMPACT COMPLETE
61	FX19762	X-ring 3,63x2,62 NBR 70
62	FX19791C	Manometer 27mm WIKA 300bar
63	FX19776	Black sleeve for manometer Impact

ITEM NO.	PartNo	DESCRIPTION
64	FX21784	Manometer 27mm WIKA 250bar
65	FX20734	Plug for Manometer Impact M4
66	FX19720	O-ring 10x1 NBR 90
67	FX10336	Safety Impact M3
68	FX4066	Steel ball 3mm
69	FX11501	Spring 0,5x2,5x6,1
70	FX19715	Socket head cap screw M3x5
71	FX19736	Plastic Washer 5,3x3,1x1
72	FX2561	Dog point grub screw M3x5
73	FX4535	Socket head cap screw M5x14
74	FX19609	Spring holder Impact
75	FX2540	Socket Head Cap Screw M6x16
76	FX19682	Socket head cap screw M3x16
77	FX5107	O-ring 2,9 x 1,78 PUR 90
78	FX19005	Stainless Inlet valve rod - (former blue)
79	FX16303	Quick connector short
80	FX4528	O-ring 7,66 x 1,78 NBR 70
81	FX19910	Dust Cover - Quick Connection
82	FX5565	Spring 0,32x2,5x4,8
83	FX21068	Power adjuster screw
84	FX19693	Impact sprintholder
85	FX7984	Socket head cap screw M3x6
86	FX5120	O-ring 2,5 x 1,5 NBR 70
87	FX19761	O-ring 2,2x1 NBR 70
88	FX10335	Brass adapter Impact M3
89	FX19040	Cylindrical pin 02x23,5
90	FX19647	Valve Rod NOT SOLD SEPARATELY
91	FX19763	O-ring 9x1,5 NBR 90
92	FX10338	Valvetube End, Power Plenum Impact M3
93	FX19105	O-ring 25,0x2,5 NBR 70
94	FX19726	O-ring 5,5x1,5 NBR70
95	FX19792	Valve pin NOT SOLD SEPARATELY
96	FX20269	Valve Seal Impact NOT SOLD SEPARATELY
97	FX19603	Valve nut Impact NOT SOLD SEPARATELY
98	FX10337	Valvetube Power Plenum Impact M3
99	FX11508	Grub screw M3x10
100	FX20671-1	Valvehouse, Impact, Big Plenum
101	FX5154	O-ring 16,0 x 2,0 NBR 90
102	FX20670R	Rear Block Impact Power 2022
103	FX19846	Grub screw M6x6
104	FX19702	Cylindrical pin 2h6x5
105	FX19606	Magazine holder Impact
106	FX20747	Left plate Impact M4
107	FX20746	Right plate Impact M4
108	FX20733	Adjustment screw recoilpad Impact M4
109	FX19618	Recoilpad Impact
110	FX19679	Grub screw M5x30
111	FX20117	Magazine bracket Impact MkII
112	FX20672	M10x1 plug power plenum
113	FX20116	Locking arm Magazine bracket MkII
114	FX16093	Spring 0,3x2x10
115	FX20055	Magnet 5x4
116	FX2505	Countersunk screw M4x10
117	FX2504	Countersunk screw M3x6
118	FX2501	Cup point grub screw M4x6
119	FX5184	O-ring 2,84x2,62 FPM90



ITEM NO.	PartNo	DESCRIPTION	QTY.
1	FX19109	O-ring 4x1,5 NBR 70	2
2	FX21070	Regulator piston Dynamic	1
3	FX2570	Washer 10x4,2x0,5	8
4	FX19790	O-ring 10,0 x 1,5 NBR 90	1
5	FX19697-1	Regulator housing Impact/Crown	1
6	FX19225	O-ring 7,5x2,0 NBR 70	1
7	FX20400	Plastic gasket Regulator piston	1
8	FX19731	O-ring 2x1 NBR 90	2
9	FX19695	Regulator Screw Impact	1

ITEM NO.	PartNo	DESCRIPTION
1	FX19636	Triggersear Impact
2	FX11504	Spring 0,32x3,2x14,4
3	FX20743	Trigger Wheel Arm Impact M4
4	FX20744	Triggerwedge Impact M4
5	FX2562	Cup point grub screw M3x3
6	FX20741	Triggerbase Impact M4
7	FX20742	Triggerbase ear Impact M4
8	FX19927	Screw trigger roll Crown
9	FX5163-35	Red Cord 3x3,5mm
10	FX19742	Grub screw M3x8
11	FX2500	Grub screw M3x6
12	FX19178	Screw M2x4
13	FX19136	Adjustable trigger blade
14	FX12035	Grub screw M2,5x2,5
15	FX19137	Trigger pin
16	FX2561	Dog point grub screw M3x5

ITEM NO.	PartNo	DESCRIPTION
1	FX10293	Quick adjustment guide Impact M3
2	FX1147	Spring 0,3xmax2,5ydx20x23,5nt
3	FX10291	Quick adjustment axle Impact M3
4	FX10292	Quick adjustment wheel Impact M3
5	FX12035	Grub screw M2,5x2,5
6	FX19602	Hammer adjuster
7	FX19715	Socket head cap screw M3x5